

WALL PANEL



Attractive & low maintenance wall coverings

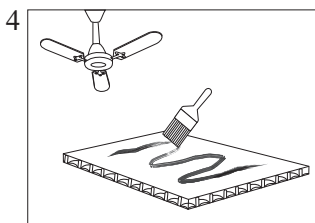
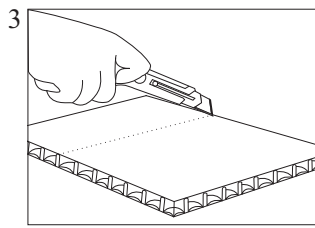
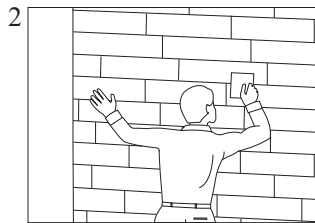
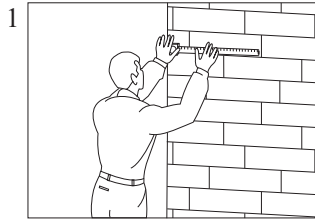
Cello Bubble guard Propylene Wall Panel has various advantages over other materials namely Waterproof, Termite Proof, Fire Retardant, Economical, Maintenance free & available in various colours & **no hassles of Paint & Polish**. The panels offers high tensile strength, resists stress cracking, retains stiffness & flex. These wall panels are also available in seamless appearance, clad with tongue & groove system offer permanent utility / decorative paneling designed to provide flexibility, durability & beauty.

Standard available sizes are 8ft x 4ft,
8ft x 3ft

Wall Paneling facts:

- 100% Waterproof
- Extremely easy to install
- (no mudding, sanding or painting required)
- Can be applied directly over existing wall.
- Termite Proof, corrosive-resistant, aging-resistant, High intensity & Impact-resistant, non-staining
- Easy to clean, Hygienic
- Class V2 fire rating
- Acid and Alkali Proof
- Heat & Sound Insulation Value
- No need of paint, Epoxy Coating

INSTALLATION GUIDE



1. Take the size of wall.

2. Scrape the wall.

3. Cut the sheet accordingly to size of the wall.

4. Apply special rubber base adhesive (SG 1000 of 3M / SP5 of Pidilite) on sheet as well as on wall. Allow it to dry for 5-10 minutes.

5. Put the sheet on wall and apply pressure from one end to the other gradually, so that no air bubble remains inside.

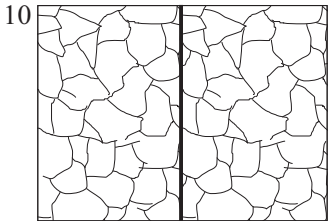
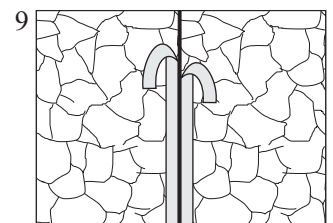
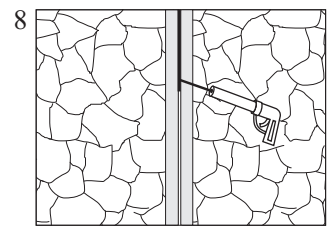
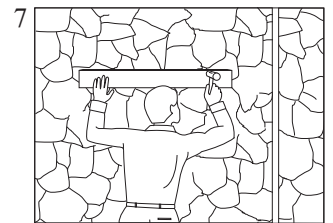
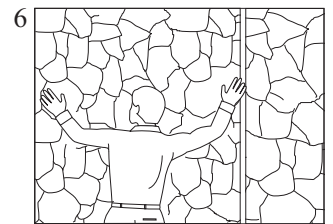
6. Kindly note that when you use 2 sheets besides one another maintain a gap of 4mm for sealant to be filled in.

7. Hammer the sheet by placing a plain wooden plank as shown in figure for fixing.

8. Put white tape on all borders of the sheet & the wall where the sheet is put up in such a way that silicon is filled in between the portion of both the tapes. This is used as sealant which serves as a frame of the sheet on the wall.

9. Then remove the tape simultaneously as you fill silicon in the gaps of the tape.

10. And the fire proof , termite proof, long lasting wall in your favourite design is ready in few ours.



TECHNICAL DATA

Made from 100% virgin polypropylene material possess all the advantages of polypropylene.

Manufactured by sheet extrusion technique and fabricated by heat lamination.

Being a fabricated product its physical and mechanical properties can be customized to meet the market needs.

Typical Properties of polypropylene are given below :

Particulars	Typical Values	Test Standard
Specific Gravity	0.9 to 9.1	
Tensile Strength (ib/inch ²)	4000 to 5200	BS2782
Elongation at break (%)	400 to 900	BS2782
Notch Izod Impact Strength (ft.ib/inch)	2.5 to 4.0	BS2782
Shore Hardness D	71 to 75	ASTM.D.148-57
Vicat Softening point (°C)	150	BS2782
Dielectric Constant (106 c/s)	2.0 to 2.15	ASTM.D.150-54
Water absorption, 24 hrs, 1/8" thick (%)	0.01-0.03	D570
Hardness, Rockwell R	80-110	D785
Thermal conductivity	2.8	C177

Sr. No	Property	Value
1.	Humidity Resistance	99%RH
2.	Material Fire Performance	V2 (also perform V0) rating
3.	Light Reflectance	80%
4.	Material	Virgin Polypropylene

SHADE CARD

